



OCA Strike Haeju
Pkg 12565
Falcon 2



Mission Briefing					
Mission	OCAstrike51th 2	Package	12565	Callsign	Falcon 2
Airbase	Yechon Airbase	Aircraft	F-16CM-50	Squadron	51st
Description	Strike Haeju Airbase				
Your Task	OCA Strike	Takeoff	14:09:29	TOT	14:37:26
Your Descp	Destroy Runway or other facilities as target site				
Situation					
<p>Situation stabilisée au sol pour le moment.</p> <p>Nous n'avons pas la supériorité aérienne.</p> <p>Plus de menace sol-air haute et moyenne altitude sur le front.</p>					
Intel					
<p>Squadron Mig-29 sur Haeju</p> <p>Squadron Su-27 sur Hwangju 40Nm Nord de la cible</p> <p>Squadron Mig-23 sur Ongin 26Nm Ouest de la cible</p> <p>Artillerie AA dans la zone target</p>					
Mission Objective					
<p>Détruire la base aérienne de Haeju, piste et installations.</p> <p>Leader - Piste (objectif principal) - BLU107</p> <p>Second - Parking taxiway (objectif principal) - Piste si leader HS - BLU107</p> <p>Troisième - Radar, Ammo Dump, Fuel Tank*2, Control Tower, Hangar - GBU39</p>					
Notes					
<p>Caler le PUSH en fonction des Refuels. Pas d'obligation d'horaire sur le target.</p> <p>3 Strike</p> <p>4 Sweep 1 F-61 peut s'équiper en Sead en cas de menaces inconnues sur zone</p> <p>Nombreux CAP sur zone, menaces connues Mig-21, 23, 29, 31</p>					

Weather Briefing

OCAstrike51th 2 - Callsign Falcon2

Target

SA 011325LT VRB03KT BLU 0/-10 Q1029
NOSIG =

FC 011325LT 0112/0124 VRB03KT BLU

Departure

RKTY / YEC - Yechon

SA RKTY 011325LT 350/6KT BLU 0/-10 Q1028
NOSIG =

FC RKTY 011325LT 0112/0124 350/6KT BLU

Alternate

RKSS / GMP - Kimpo

SA RKSS 011325LT VRB03KT BLU -4/-14 Q1029
=

FC RKSS 011325LT 0112/0124 VRB03KT BLU

Extended around departure

RKPP / KPP - Pusan

SA RKPP 011325LT 261/4KT BLU -16/-26 Q1029
NOSIG =

FC RKPP 011325LT 0112/0124 261/4KT BLU

RKND / SHO - Sokcho

SA RKND 011325LT 284/8KT BLU 7/-3 Q1028
NOSIG =

FC RKND 011325LT 0112/0124 284/8KT BLU

R110 / 110 - R110

SA R110 011325LT VRB03KT BLU -10/-20 Q1029
NOSIG =

FC R110 011325LT 0112/0124 VRB03KT BLU

RKTI / KTI - Chongwon

SA RKTI 011325LT 340/6KT BLU -3/-13 Q1029
NOSIG =

FC RKTI 011325LT 0112/0124 340/6KT BLU

RKUC / KUC - R505

SA RKUC 011325LT 324/6KT BLU -10/-20 Q1029
=

FC RKUC 011325LT 0112/0124 324/6KT BLU

Page 1		DATACARD							
ATIS		RKTY INFO: B 011325LT ILS RWY26 TRL140 350/6KT BLU 0/-10 Q1028 NOSIG							
Airbase		Airbase	TCN	UHF	VHF	Elv	RWY	ILS	
	DEP	Yechon	26 X	269.500	124.350	486	26	109.30	
	ARR	Yechon	26 X	269.500	124.350	486	08	---	
	ALTN	Kimpo	83 X	240.900	118.050	96	14R	110.10	
Flight	Pos	Name	IDM	TCN	TO	LND	CONF-LSR	Mode 2/3	
	1 Lead	*	1-1	12Y			1688		
	2 Wing		1-2	22Y			1688		
	3 Element		1-3	75Y			1688		
	4 Wing		1-4	85Y			1688		
Package	Callsign Pack12565		Aircraft Type	UHF	VHF	IDM	TCN	Task	
	* 1: Falcon 2		3 F-16CM-50	6	#1	XMT 10	12Y	OCA STRIKE	
	2: Lobo 2		4 F-16CM-50	6	#2	XMT 20	13Y	SWEEP	
	3:								
	4:								
	5:								
Flightplan	STPT	Action	TOS	HDG	Dist	Mach / GS	Alt	Min.Fuel	Formation
	1	TakeOff	14:09:29	---	---	---	486	2100	Wedge
	2	Refuel	14:21:10	263	67.4	.xx / 345	22000	1000	Wedge
	3	Holding	14:30:39	305	65.1	.67 / 410	22000	4000	Wedge
	4	Push	14:35:04	325	34.1	.76 / 460	22000	3400	Wedge
	5	Nav	14:36:49	360	14.0	.73 / 480	400	3200	Wedge
	6	Strike	14:38:35	313	14.1	.73 / 480	400	2900	Wedge
	7	Split	14:47:39	148	61.1	.66 / 400	22000	2000	Wedge
	8	Refuel	14:55:19	124	61.4	.78 / 475	22000	1000	Wedge
	9	Land	15:03:43	085	67.2	.73 / 480	486	3300	Wedge
	10	Land	---	299	111.0	---	---	1000	---
	11								
	12								
	13								
	14								
	15								
	16								
	17								
	18								
	19								
	20								
	21								
	22								
	23								
	24								

Page 2		DATACARD																
1265334		Callsign	Falcon 2		Package	12565		Mission	OCAstrike51th 2									
TO / Loadout	Config				TO Spec		13°/Mil		int Fuel		7162							
	A-A	2x A120C 2x A-9X			Gross Wgt	39691		Rotation	173		TO Fuel	11994						
	A-G	6x BL107			Drag ind	274		Refusal	159		Set Fuel							
	ECM	1x AL184			ALOW	400		Mil Power	108 %		JOKER							
	Tanks	2x TK370			MSL	10000		Mil Climb	340/0.73		BINGO	2500						
Tgt	Primary	Haeju Airbase						Secondary										
	DMPI	Runway						DMPI										
	Lat&Long	N38,02.111 / E126,36.460 - 113°						Lat&Long										
Weapon	EWS = THR		1 =		2 =		3 =		4 =		5 =		6 =					
	Profile 1	AG	INV	PROF1	CCR	Fuze	NOSE	SGL/PAIR	SGL	Profile 2	AG	INV	PROF2	CCIP	Fuze	NOSE	SGL/PAIR	SGL
		NS/	AD	SG/	PA	AD	04.00	RP	0		NS/	AD	SG/	PA	AD	04.00	RP	0
		TL	REL	PA	HB	0500	SPACING	175	HB		0500	SPACING	175					
		SMS	FT	REL	AGL	45	B. CODE	1688	SMS		FT	REL	AGL	45	B. CODE	1688		
Delivery	None	VIP / VRP			OA1	OA2		PUP	Pull Hdg									
	TBRG								Climb									
	RNG								Pull Dwn									
	ELV								Turn									
	Ingress Alt				Rel Height				Attack hdg									
Ingress Spd				Rel Spd				TGT in HUD										
Support	AC Type			TACAN	UHF		LOC		Notes:									
	Tanker 1	Camel1 - KC-135			29Y			229 / 79		18:00 - 23:08								
	Tanker 2																	
	AWACS	Chalis1 - E-3						181 / 88		14:14 - 19:18								
	JSTAR	Sentry1 - E-8C						178 / 79		16:13 - 21:17								
FAC																		
										Class		MTR	FR	MAR	DR	DOR		
ROE										Feux libre. Awacs declare								
										Identification visuel (TGP-A/A) si pas de réponses Awacs								

COORDINATION CARD				Package	12565 OCAStrike51th 2		CC	
				Date		Change	DEP CC	
CALLSIGN	NR & Type	TASK	Taxi	T/O	HOLD PT		HOLD ALT	
* Falcon 2	3 F-16CM-50	OCA STRIKE	14:03:30	14:09:29	STPT 4		FL220	
Lobo 2	4 F-16CM-50	SWEEP	14:03:00	14:09:00	STPT 4		FL220	
ROUTE				TAXITIMES				
FUNCTION	NAME	Latitude	Longitude	Rwy 26	6 Min	Rwy 08	6 Min	
Refuel	STPT 2	N36,33.624	E128,15.635	ADMIN				
Holding	STPT 3	N37,10.805	E127,11.250	STD QNH	1013	FORCE QNH	1029	
Push	STPT 4	N37,38.825	E126,48.322	TRANSIT LVL	FL220	MSAA		
Nav	STPT 5	N37,52.835	E126,49.044	REFORM PLAN RTB - STD / FORCE QNH*				
Strike	STPT 6	N38,02.534	E126,36.549	<div style="text-align: center; font-size: 2em; font-weight: bold;"> CLICK TO LOAD PIC </div>				
Split	STPT 7	N37,10.805	E127,14.632					
Refuel	STPT 8	N36,36.318	E128,15.818					
Land	STPT 9	N36,41.707	E129,39.517					
Land	STPT 10	N37,36.130	E127,42.595					
BULLSEYE								
Bullseye		N38,00.648	E127,26.723					
PLANNED ENROUTE SPEEDS								
MEDIUM LEVEL			LOW LEVEL					
HOLDING PLAN - STD / FORCE QNH*								
<div style="text-align: center;"> <p>STPT →</p> <p>CW</p> <p>← 10 Nm / TRACK 180° / 10° →</p> <p>10 Ft</p> <p>TIMING</p> <p>10 : 00</p> </div>								
MODE 1 TIMETABLE			LINK 16			SPINS		
08:00	10:00	12:00	NETWORK			BLUE	C/S	RED
:30	:30	:30	CRYPTO				SAFE AREA	
09:00	11:00	13:00	NTR		FC MC		BLOCK's	
:30	:30	:30	TIME					
HAVE QUICK		AWACS TOD		CP TOD		HARDDECK		
DAY	20	19	18	17	16	15	14	
DAY	20	19	18	17	16	15	14	

CALLSIGN	INFLIGHT FREQ	A-A TAC	TRANSIT ALT	PUSHTime	PUSH ALT	TOT	WEAPON LOAD	ALT. TOT	REC. ALT						
* Falcon 2	#1	12Y	14000'	14:35:04	22000'	14:38:35									
Lobo 2	#2	13Y	14000'	14:34:37	22000'	14:37:46									
PACKAGETIMING		0	1	2	3	4	5	6	7	8	9	B-ALT	B-HEAD	B-NUM	B-FUEL
ROLL CALL															
EOB UPDATE		AGENCY/CALLSIGN					PRI			SEC		TER		HQ	
TAKEOFF TO PUSH															
TOT WINDOW															
RE-ATTACK WINDOW															
LAST OUT															

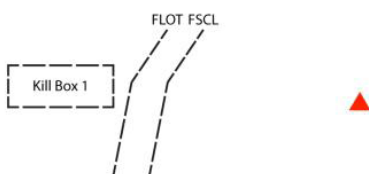
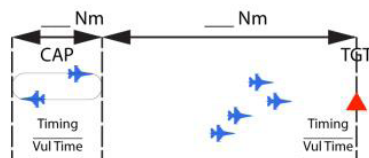
INGRESS - STD / FORCE QNH*

EGRESS - STD / FORCE QNH*

CLICK TO LOAD PIC

TARGET AREA FLOW - STD / FORCE QNH*

TARGET AREA FLOW - STD / FORCE QNH*



CODEWORDS

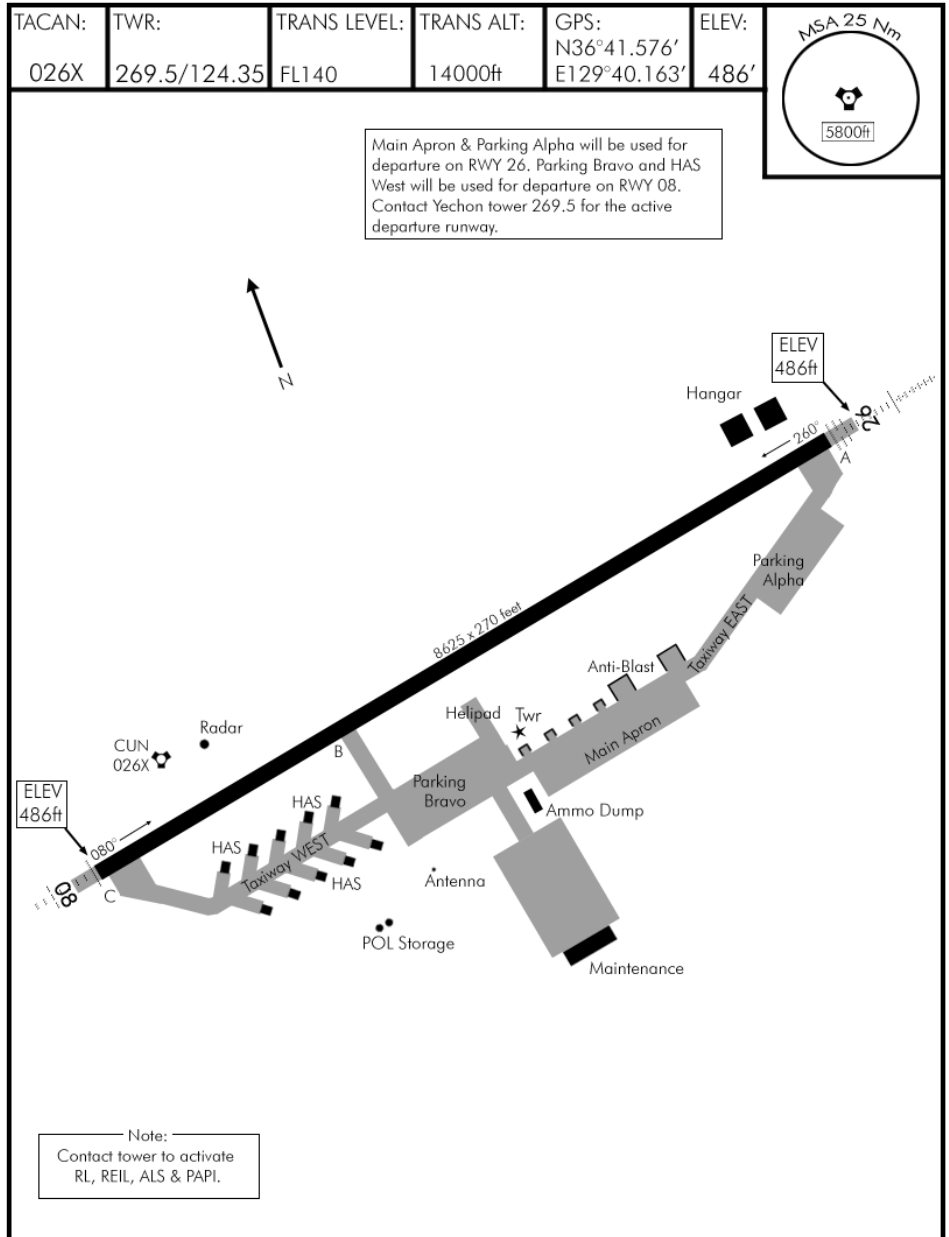
AS FRAGGED		AMR LOW/MED/HIGH		SPOOFING	
ON STATION		W/F ZONE ACTIVE		CHATTERMARK PRI	
OFF STATION		W/F ZONE CANCELLED		CHATTERMARK SEC	
PUSHING	Pastis	ATTACK PRIM. TGT		CHATTERMARK TER	
REQUEST ROLEX		ATTACK SEC. TGT		CHATTERMARK HQ	
ROLEX		ATTACK SUCC.	Massilia	LAME DUCK	
MISSION ABORT	Solo	ATTACK UNSUCC.		WOUNDED BIRD	
PACKAGE ABORT		TARGET OBSCURED	Gilbert	BAILOUT OCCURRED	
MISSION SUCC.		RE-ATTACK		ESCORT ROLL	
MISSION UNSUCC.	FireFox	LAST OFF TARGET			
BOMB JETTISON		RTB	Garage		

KOREAN NAVIGATION VOLUME

AIRPORT DIAGRAM

Date: 14 Aug 2014

YECHON AERO (RKTY)
SOUTH KOREA



AIRPORT DIAGRAM

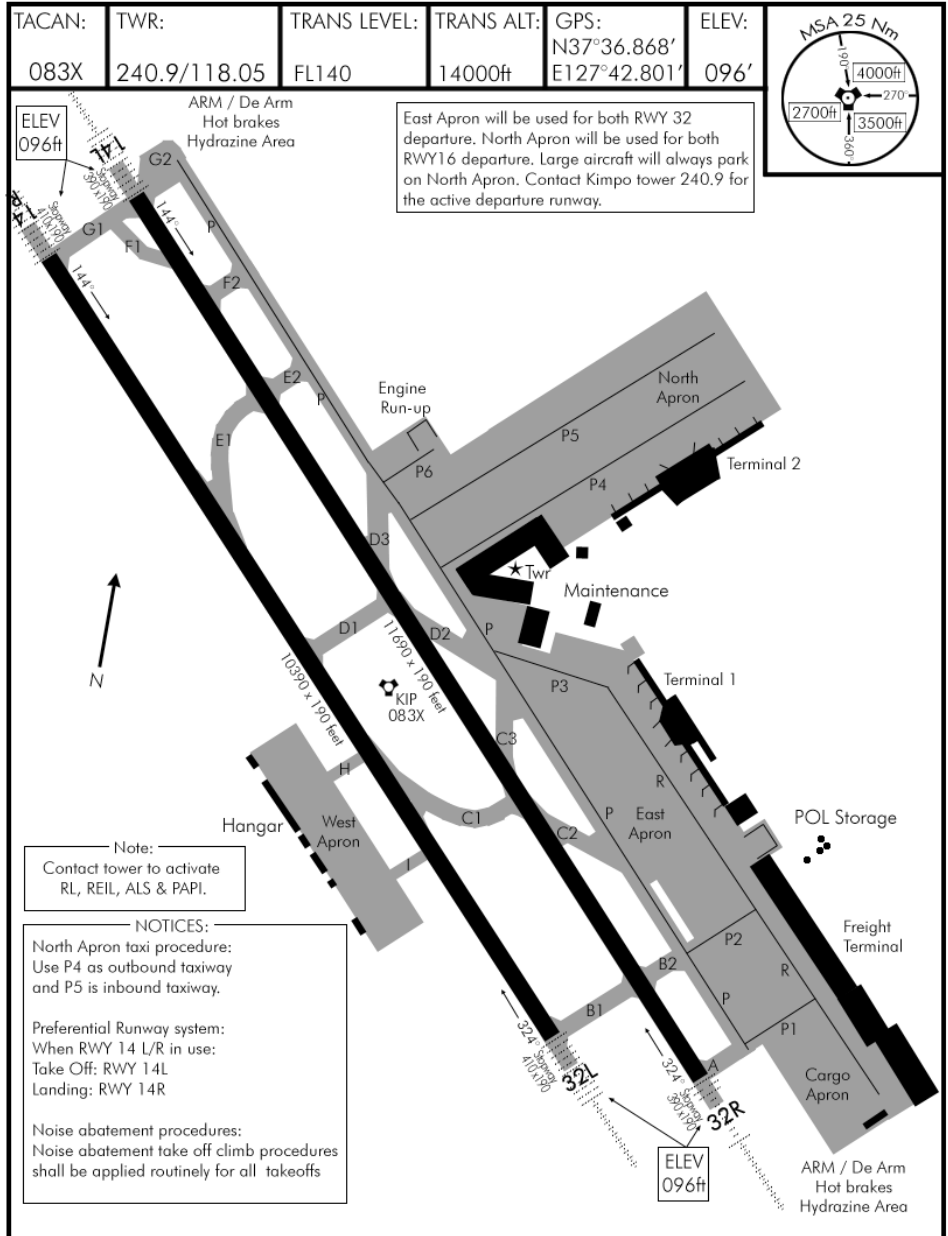
NOT FOR REAL NAVIGATION - FALCON 4 BMS ONLY

© COMBATSIM CHECKLISTS 2014

YECHON AERO (RKTY)
SOUTH KOREA

AIRPORT DIAGRAM

Date: 25 July 2014



AIRPORT DIAGRAM

© COMBATSIM CHECKLISTS 2014

KIMPO INTL (RKSS)
SOUTH KOREA

NOT FOR REAL NAVIGATION - FALCON 4 BMS ONLY

